

Structure & Finances

The Museum employs around 165 people with a supporting and active trading company of 35 staff. These are assisted by over 200 regular volunteers across the two sites.

Volunteers support a range of activities, which include cataloguing archive material, providing guided tours of the Museum, supporting conservation efforts, raising funds for the Museum and engaging with visitors in the interactive galleries.

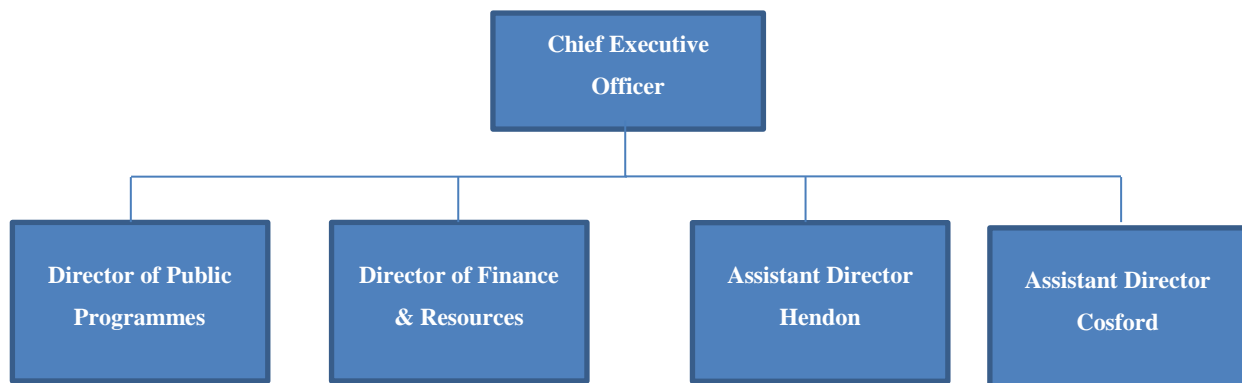
In 2016, the Museum received £8,561,120 of Grant in Aid (2015: £8,336,169) via the Ministry of Defence. However, as with all Museums, there is a critical impetus to improve self generated funding. Other income included donations and legacies whilst funding generated by the trading company on non-charitable activities amounted to £2,591,801 (2015: £2,373,221).

The value of the group net assets has increased during the year, and now stands at £94,367,256 at the Year End (2015: £90,095,354) (Consolidated Balance Sheet).

The increase in the previous year was a direct result of the quinquennial revaluation of the Land and Buildings at the Museum sites by professional valuers.

The Museum's Financial Statements are audited by the National Audit Office and laid before Parliament. A full copy can be downloaded [here](#).

Senior Leadership Team Structure



Departments include:

- Collections
- Centenary Programme
- Exhibitions

Departments include:

- Finance
- Human Resources
- Buildings and Engineering

Departments include:

- Events
- Visitor Experience
- Access & Learning